

**NOTICE OF UPCOMING CONSTRUCTION**

Construction activities for the City of Tampa’s Cypress Street Outfall Regional Stormwater Improvements project will soon begin in your area. **As crews begin installation of the box culvert, W. Gray Street will be closed from N. Fremont Avenue to N. Albany Avenue beginning the week of February 1, 2021, weather permitting (see map on back of flyer).** Detour signs and barricades will be located in the area to assist with traffic flow.

Construction along N. Rome Avenue from W. Cass Street to W. Kennedy Boulevard is still ongoing and is anticipated to be completed by mid-spring of 2021.

As crews continue construction, the City of Tampa reminds property owners, tenants, pedestrians, bicyclists, and commuters to exercise caution when traveling through construction zones.

**Road Closure on W. Gray Street from  
N. Fremont Avenue to N. Albany Avenue  
to begin the week of February 1, 2021, weather permitting**



**What to Expect**

- Clearing of public rights-of-way along project segments
- Construction in the roadway and within the public right-of-way of active segments
- Increased truck traffic and the operation of heavy equipment in and around construction zones
- Storage of equipment and materials in the roadway and within the public right-of-way of active segments
- Sidewalk and road closures, detours, and flagging operations
- Temporary loss of driveway access and on-street parking
- Brief water service interruptions *(Note: Property owners/tenants will be notified in advance of planned service interruptions.)*

**How to Prepare**

- Remove existing landscape and/or hardscape items you would like to save from the right-of-way area abutting your property (typically 15 feet from the edge of pavement) prior to the start of construction
- Avoid installing new landscape and/or hardscape items within the right-of-way area abutting your property or making any driveway modifications until final restoration of your area is complete

**Bicyclists and Pedestrians**

- Wait for flagmen to signal it is safe to proceed before crossing the street
- Do not walk or bike in front of construction equipment

**Drivers**

- Wait for flagmen to signal before proceeding through work zones
- Be aware of pedestrians and bicyclists
- Watch for materials, trucks, and construction equipment stored or operating in or near roadway construction zones

**CONTACT US:**

Project Hotline: **(813) 321-0809**

Email: [Info@Cypress-StreetOutfall.com](mailto:Info@Cypress-StreetOutfall.com)

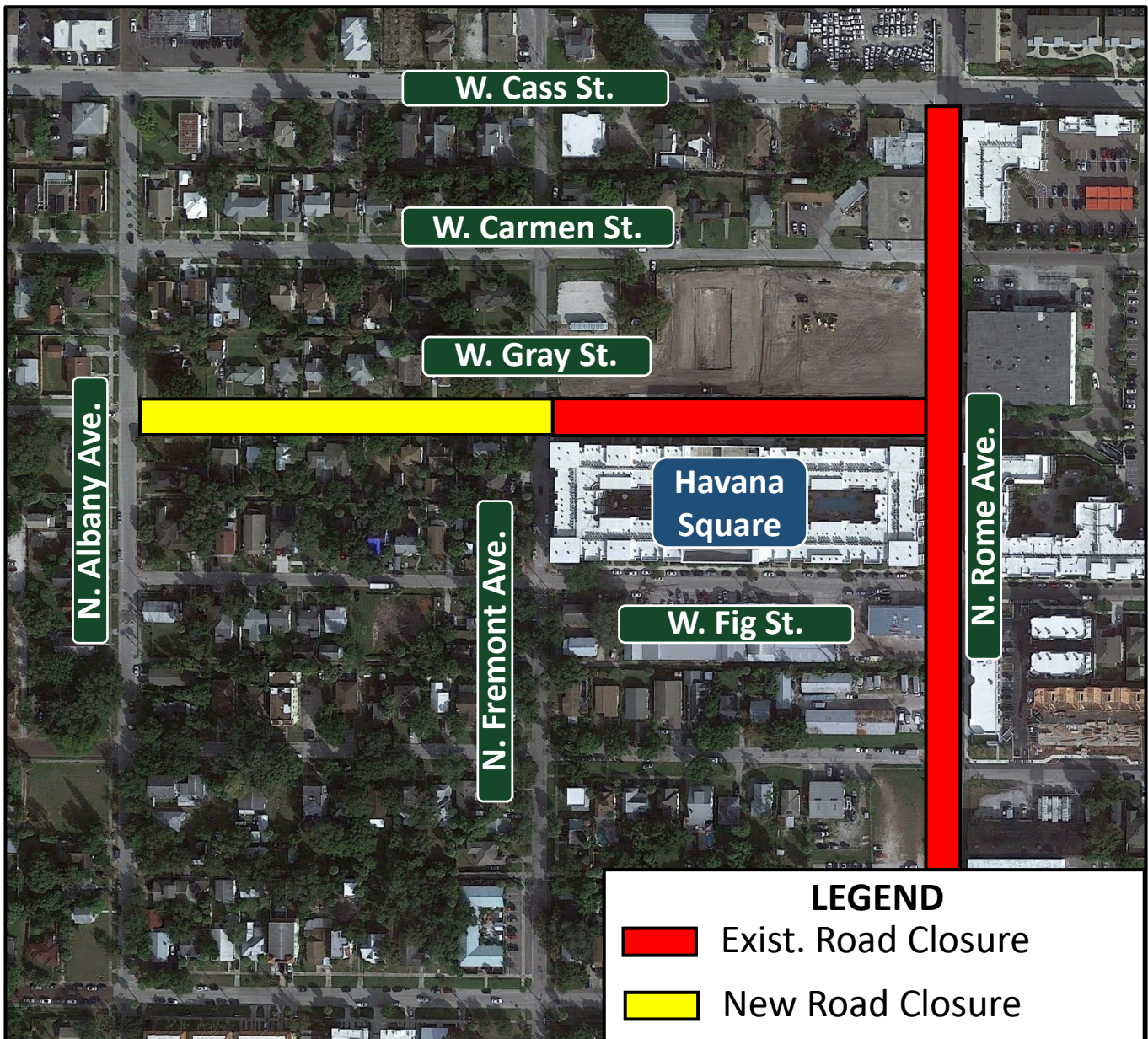
Website: [www.Cypress-StreetOutfall.com](http://www.Cypress-StreetOutfall.com)

For project updates and notifications, scan the QR code to download our app for more information!

Available for Apple and Android Users



Road Closure on W. Gray Street from  
N. Fremont Avenue to N. Albany Avenue  
to begin the week of February 1, 2021, weather permitting



## CONTACT US:

Project Hotline: (813) 321-0809

Email: [Info@Cypress-StreetOutfall.com](mailto:Info@Cypress-StreetOutfall.com)

Website: [www.Cypress-StreetOutfall.com](http://www.Cypress-StreetOutfall.com)

For project updates and notifications,  
scan the QR code to download our app  
for more information!

Available for Apple and Android Users

